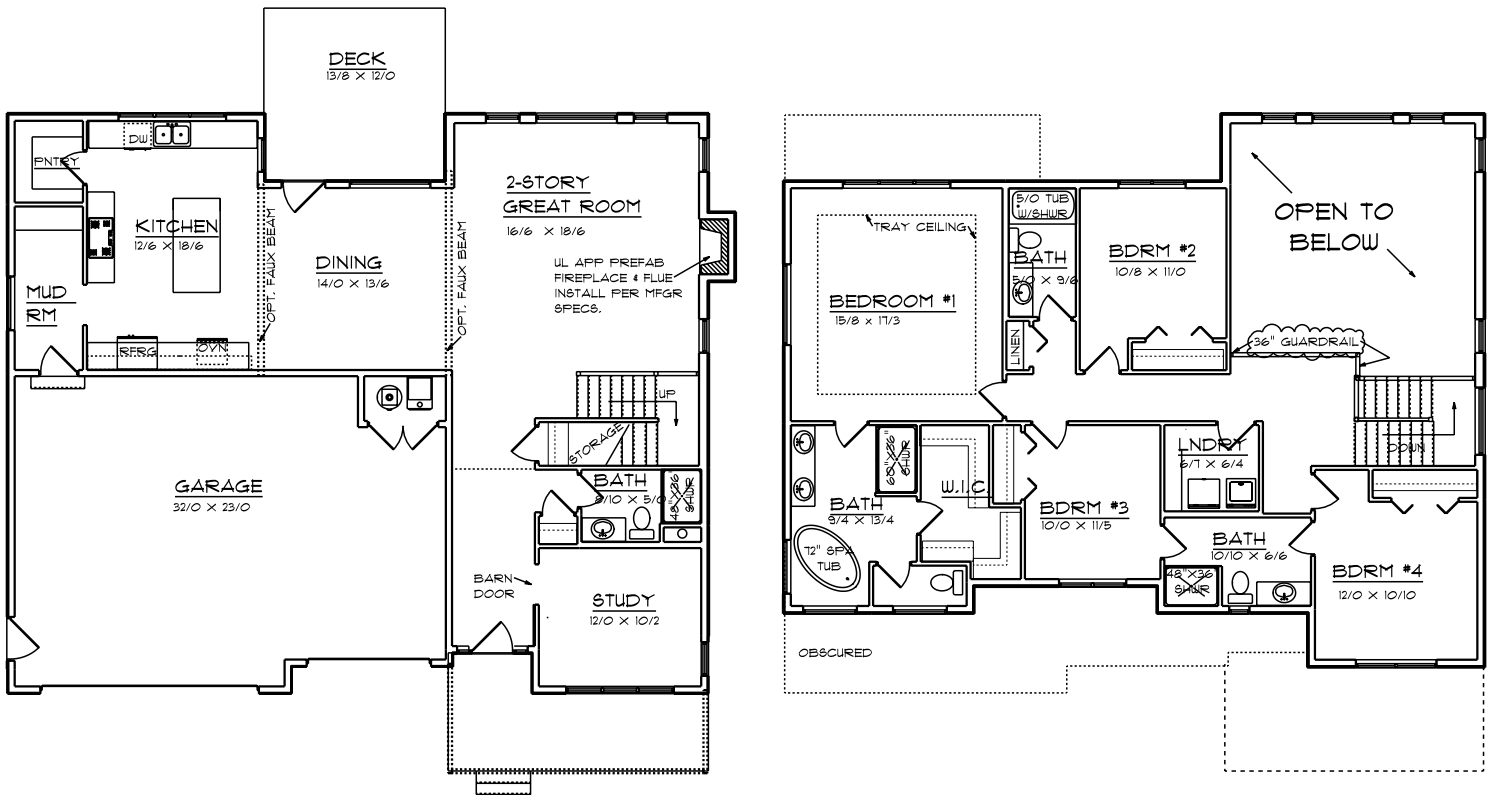


THE CHULITNA PLAN



HULTQUIST HOMES INC. OF ALASKA

HULTQUISTHOMES.COM

PHONE: 907-522-3204

2ND FLOOR:	1,418 S.F.
1ST FLOOR:	1,331 S.F.
TOTAL LIVING:	2,749 S.F.
GARAGE:	744 S.F.
WIDTH:	DEPTH:
52'-0"	50'-0"