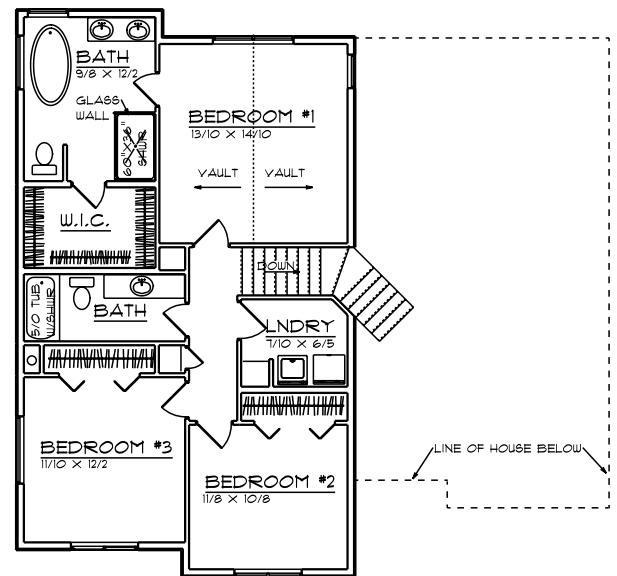
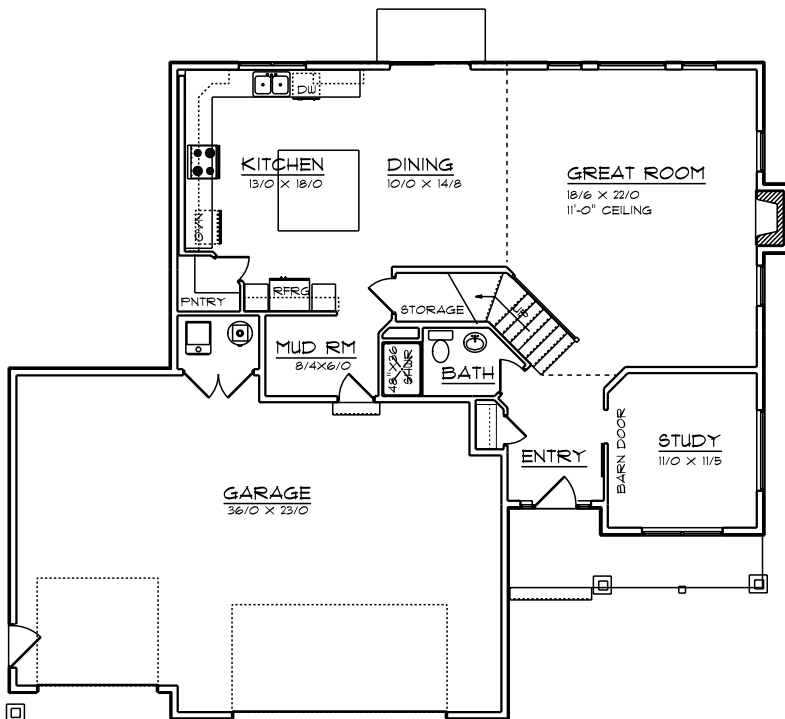


THE GULKANA PLAN



HULTQUIST HOMES INC. OF ALASKA

HULTQUISTHOMES.COM

PHONE: 907-522-3204

2ND FLOOR:	995 S.F.
1ST FLOOR:	1,276 S.F.
TOTAL LIVING:	2,271 S.F.
GARAGE:	892 S.F.
WIDTH:	58'-9"
DEPTH:	48'-9"